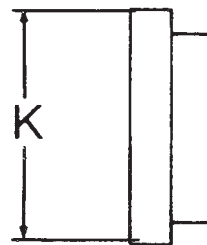
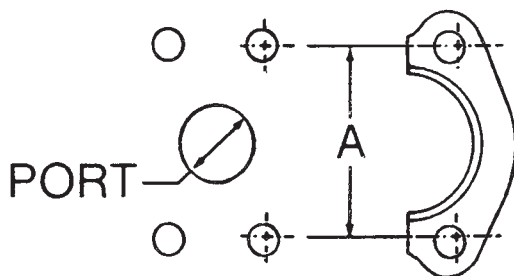




# SAE 4-Bolt Flange\*

This connection is commonly used in fluid power systems. There are two pressure ratings. Code 61 is referred to as the “standard” series and Code 62 is the “6000 psi” series. The design concept for both series is the same, but the bolt hole spacing and flanged head diameters are larger for the higher pressure, Code 62 connection.

The female (port) is an unthreaded hole with four bolt holes in a rectangular pattern around the port. The male consists of a flanged head, grooved for an O-Ring, and either a captive flange or split flange halves with bolt holes to match the port. The seal takes place on the O-Ring, which is compressed between the flanged head and the flat surface surrounding the port. The threaded bolts hold the connection together.



\*SAE J518, JIS B 8363, ISO/DIS 6162, DIN 20066, and JIS B 8363 Komatsu Flange are interchangeable, except for bolt sizes.

Inch Size (Inch Dash)	Port Hose Bolt I.D. Inch Fraction (Decimal)	Bolt Dimensions Inch (Decimal)		Bolt Hole Spacing “A” Inch (Decimal)	
		Cd. 61	Cd. 62	Cd. 61	Cd. 62
1/2 (08)	1/2 (.50)	5/16-18x1 1/4	5/16-18x1 1/4	1 1/2 (1.50)	1 19/32 (1.50)
3/4 (12)	3/4 (.75)	3/8-16x1 1/4	3/8-16x1 1/2	1 7/8 (1.88)	2 (2.00)
1 (16)	1 (1.00)	3/8-16x1 1/4	7/16-14x1 3/4	2 1/16 (2.06)	2 1/4 (2.25)
1 1/4 (20)	1 1/4 (1.25)	7/16-14x1 1/2	1/2-13x1 3/4	2 5/16 (2.31)	2 5/8 (2.63)
1 1/2 (24)	1 1/2 (1.50)	1/2-13x1 1/2	5/8-11x2 1/4	2 3/4 (2.75)	3 1/8 (2.63)
2 (32)	2 (2.00)	1/2-13x1 1/2	3/4-10x2 3/4	2 1/16 (3.06)	3 13/16 (3.81)

Inch Size (Inch Dash)	Port Hose I.D. Inch Fraction (Decimal)	Flanged Head Diameter "K" Inch (Decimal)	
		Cd. 61	Cd. 62
½ (08)	½ (.50)	1⅜ (1.19)	1¼ (1.25)
¾ (12)	¾ (.75)	1½ (1.50)	1⅝ (1.63)
1 (16)	1 (1.00)	1¾ (1.75)	1⅞ (1.88)
1¼ (20)	1¼ (1.25)	2 (2.00)	2⅞ (2.13)
1½ (24)	1½ (1.50)	2⅞ (2.38)	2½ (2.50)
2 (32)	2 (2.00)	2⅜ (2.81)	3⅞ (3.13)

## How to Measure

**Four Bolt Flange**—First measure the port hole diameter using the caliper. Next, measure the longest bolt hole spacing from center-to-center (Dimension "A") or measure the flanged head diameter (Dimension "K").

Note: CAT flanges have a .560" flange thickness (in all sizes) to correspond Caterpillar® split flanges. Other flange dimensions are identical to Code 62.

